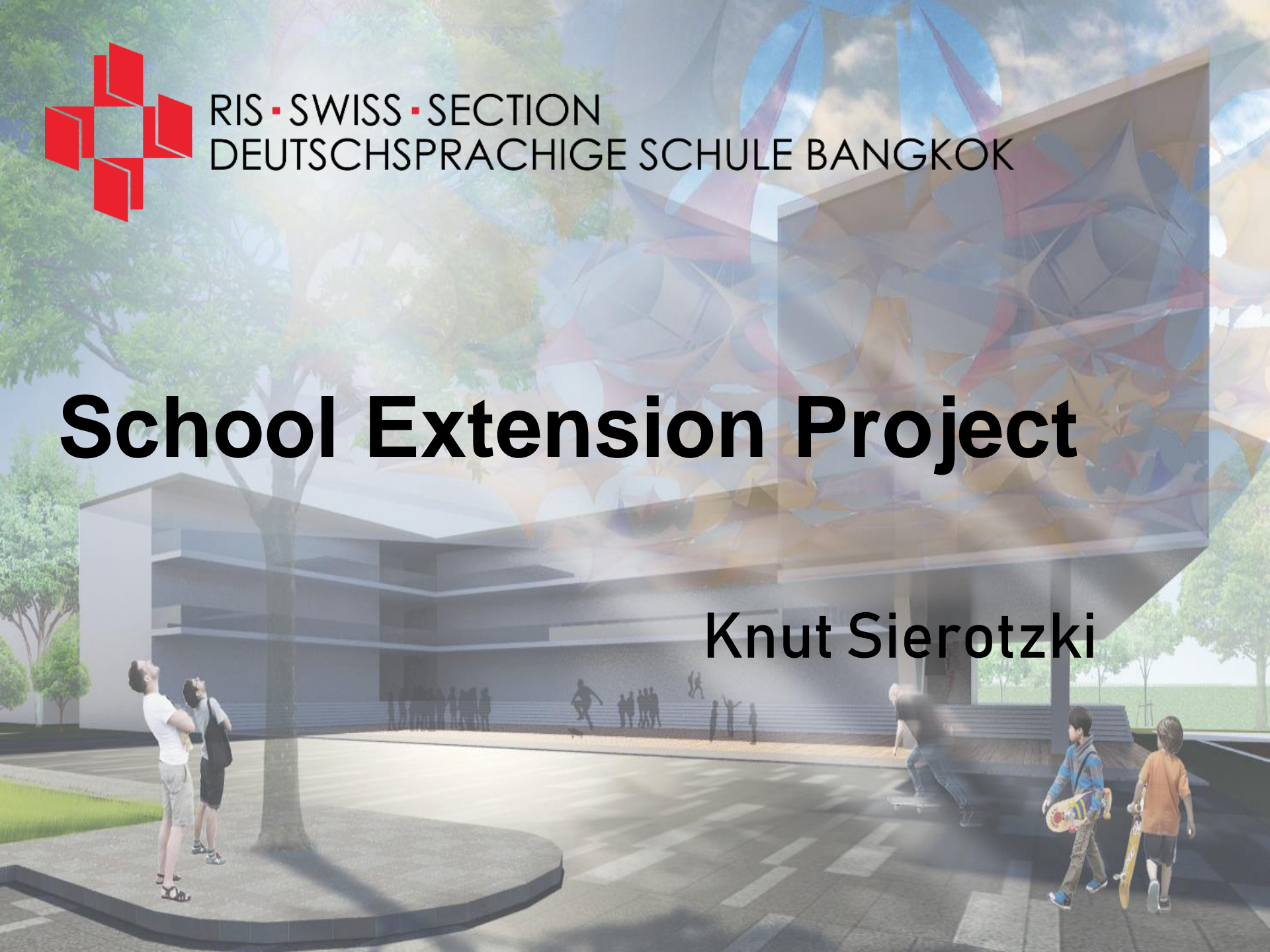




RIS · SWISS · SECTION
DEUTSCHSPRACHIGE SCHULE BANGKOK

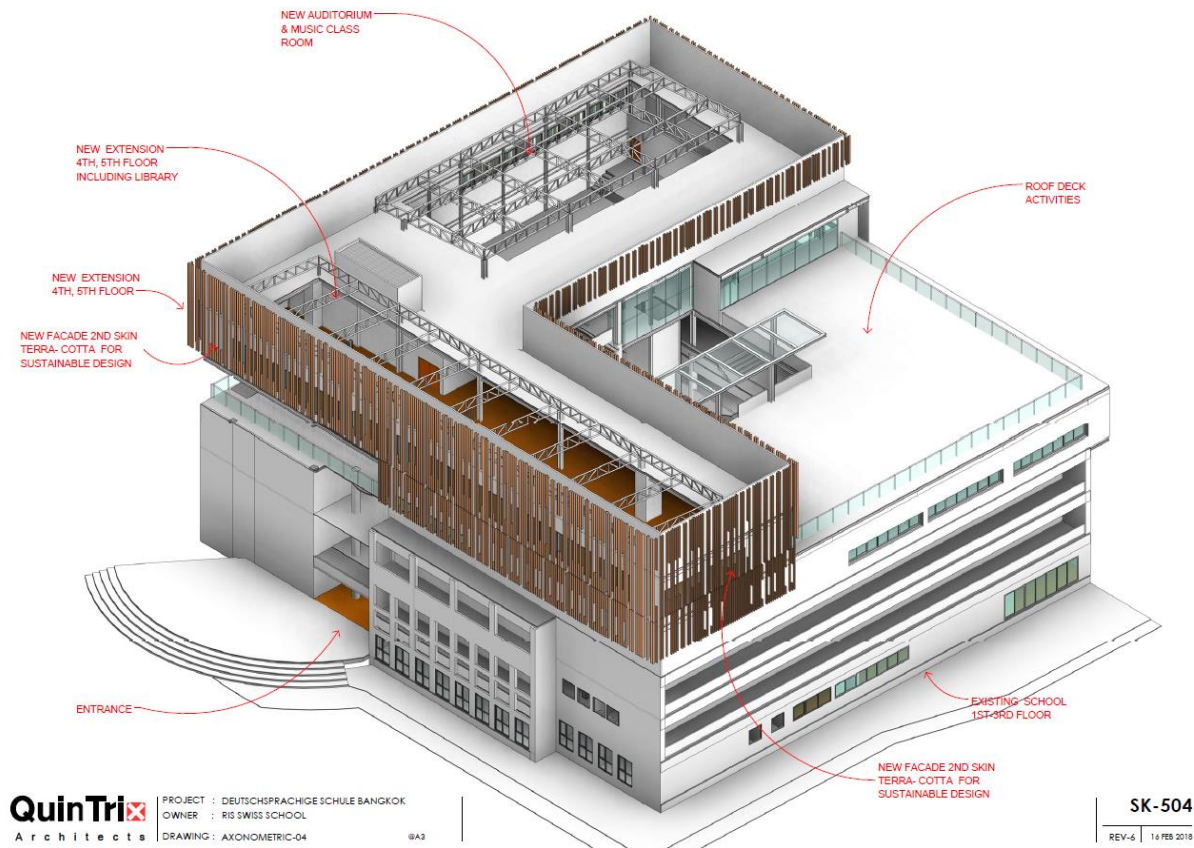
School Extension Project

Knut Sierotzki





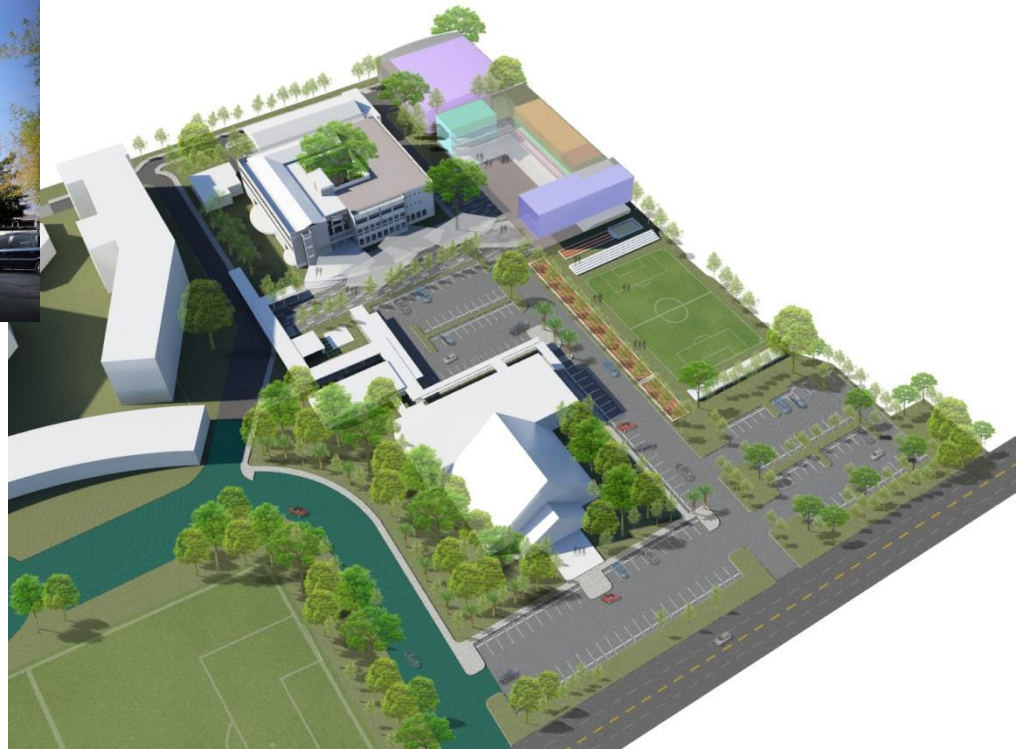
Original Ideas of adding two floors





RIS • SWISS • SECTION
DEUTCHSPRACHIGE SCHULE BANGKOK

Original Ideas and New Masterplan



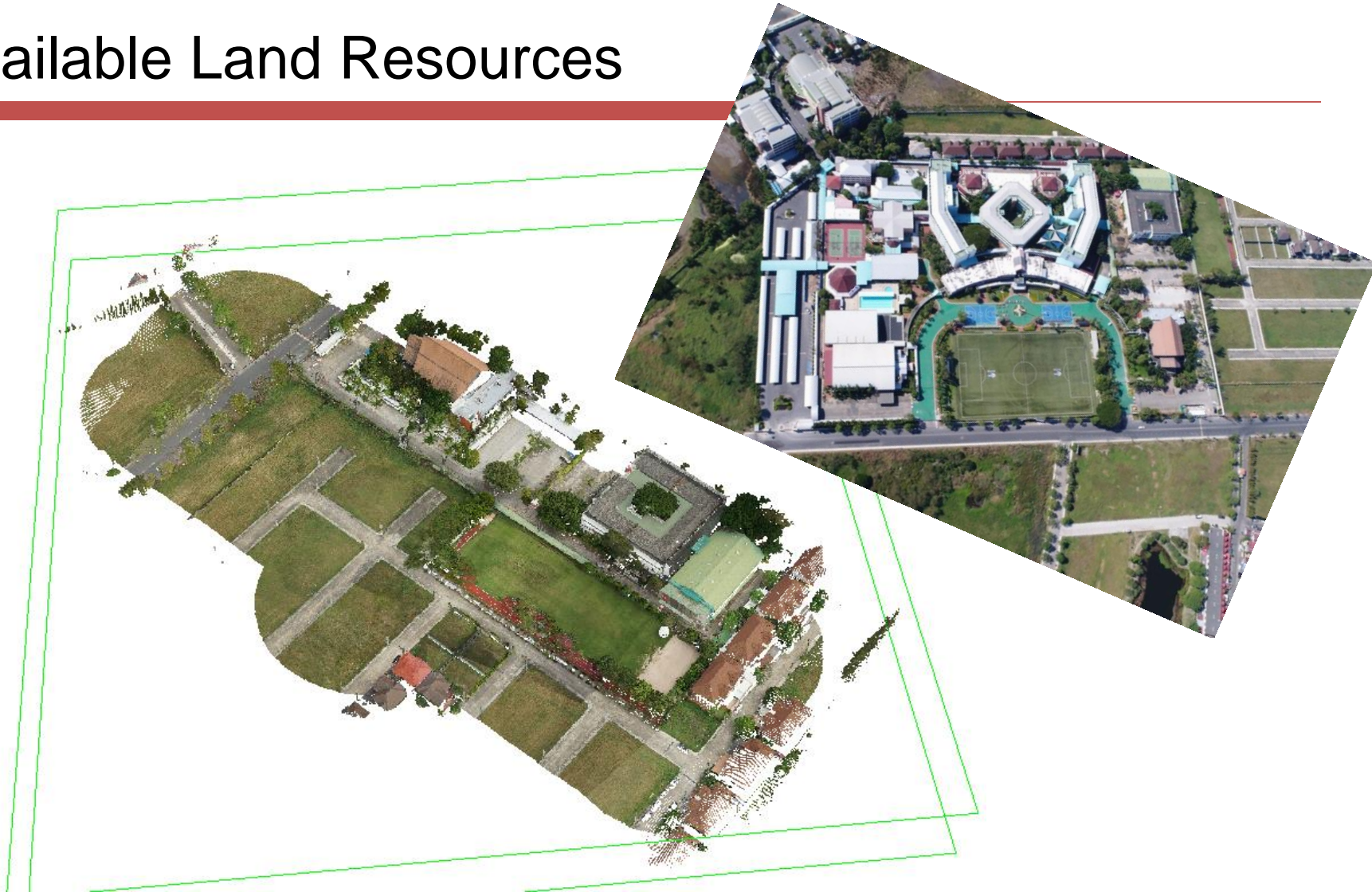
Schweizerische Eidgenossenschaft
Confédération suisse
Confederazione Svizzera
Confederaziun svizra

SWISS
GOVERNMENT APPROVED
SCHOOL

DAS
Deutsche Auslandsschulen
International

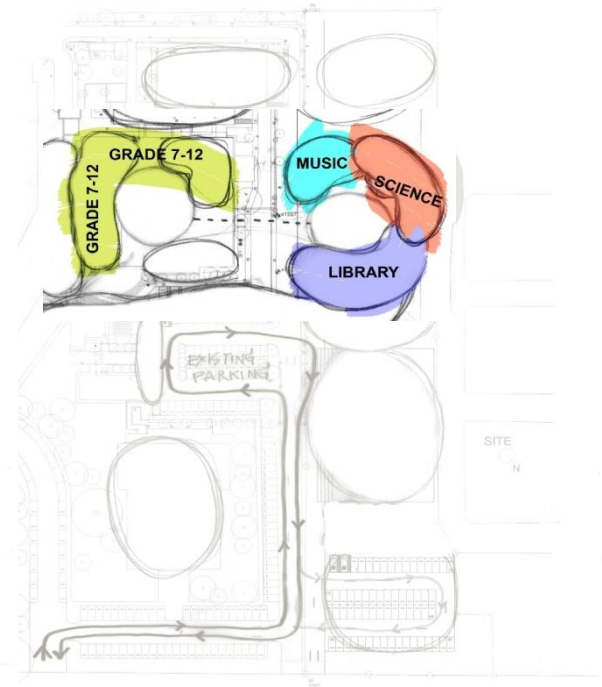
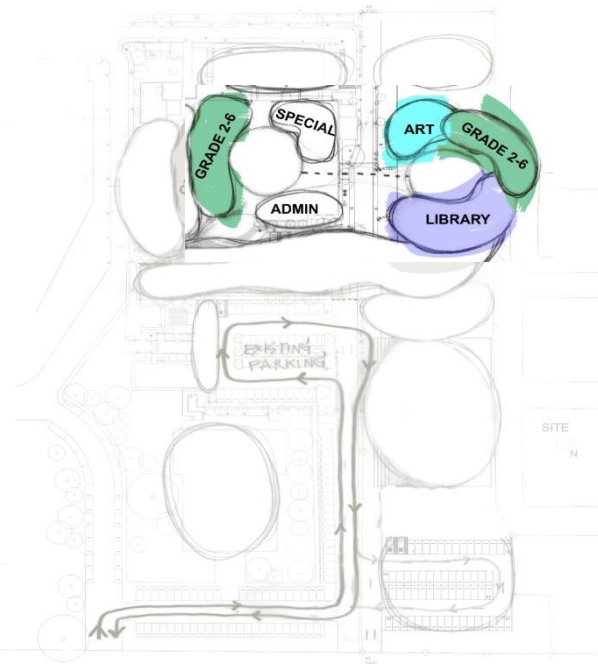
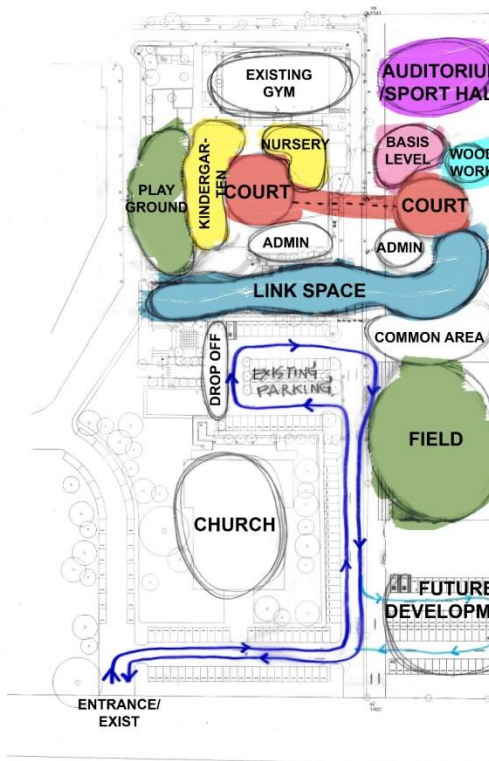


Available Land Resources

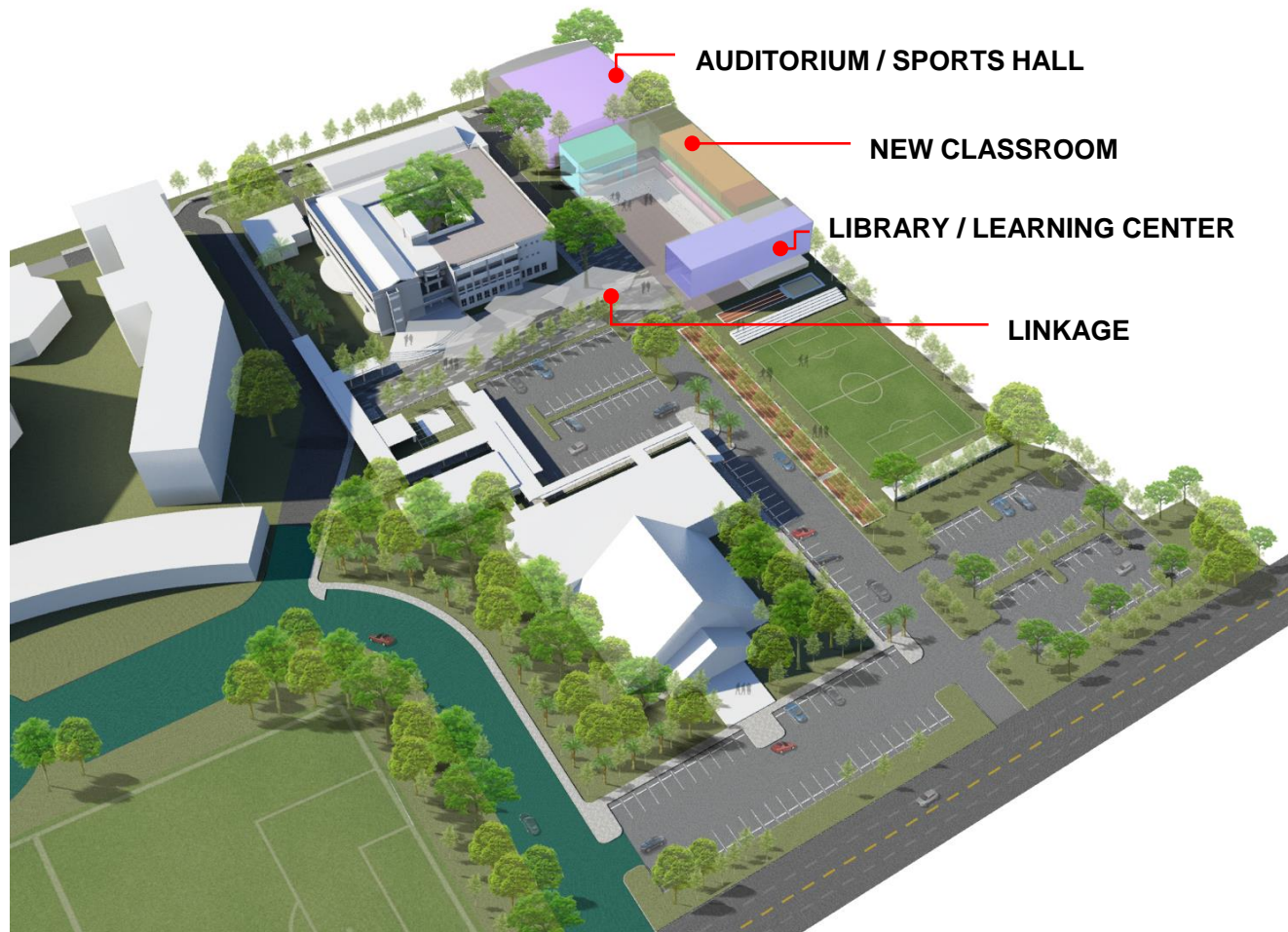




Basic Concept, Interlinking of Space

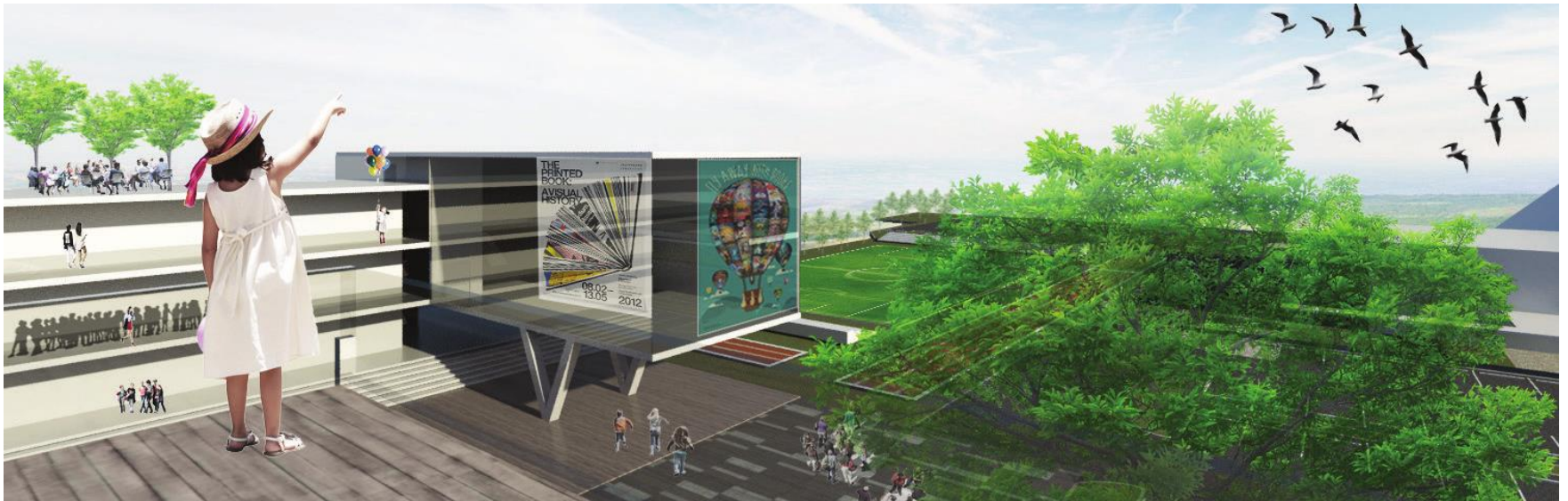


School Extension Overview



School Principles

- The new campus will facilitate the latest innovations in education and teaching methods
- The new campus will improve the learning experience of students and provide challenging learning environments



School Principles

- It will consist of a state-of-the-art learning and activity complex with spacious, interactive and multifunctional learning areas, with a nursery, learning atelier/library, gym, science and music facilities



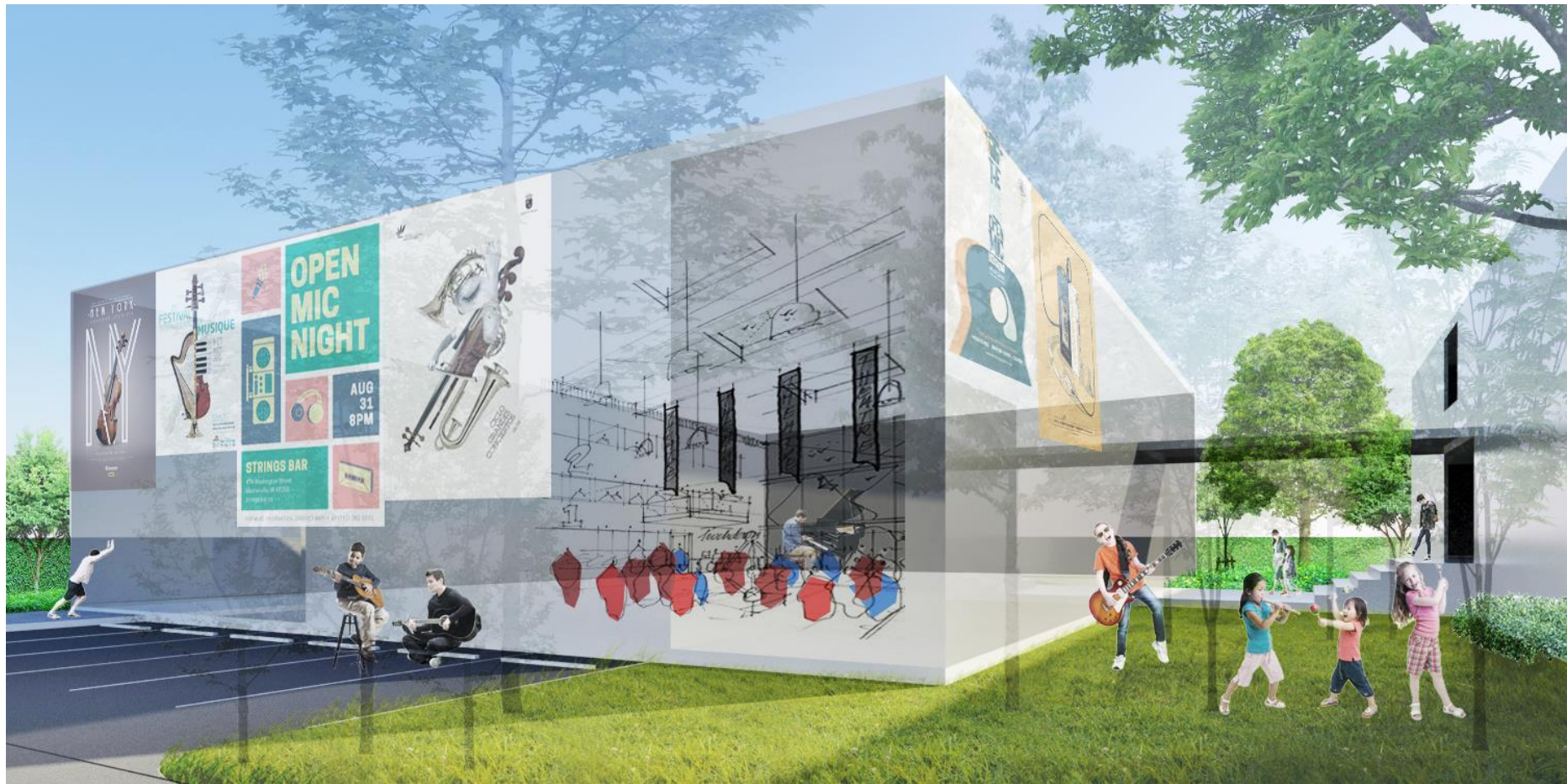
School Principles

- The facilities will cope with the increasing demand for Swiss, German and Austrian education in Bangkok
- Implementing a sustainable long term perspective for the school





Impressions



Sponsoring is welcomed

- Long-term brand awareness & media exposure
- Connect the sponsors' brand with high quality education
- Increase business' reach and exposure
- Put the sponsors brand front and center



